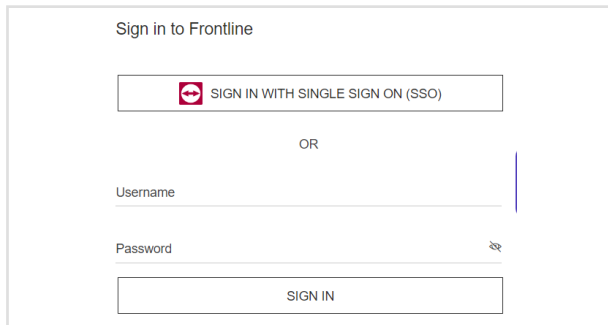


Almer Arc 2

How to call - Expert

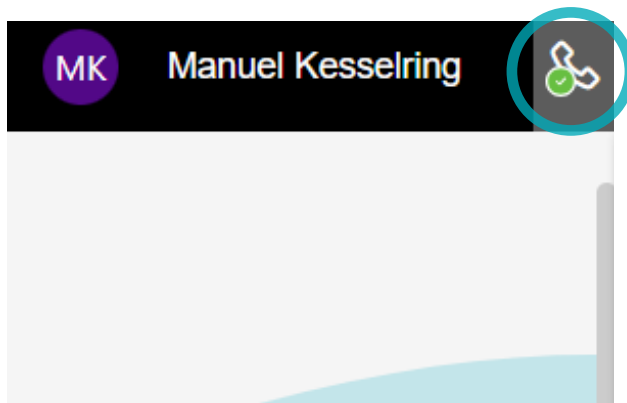
1 Log in



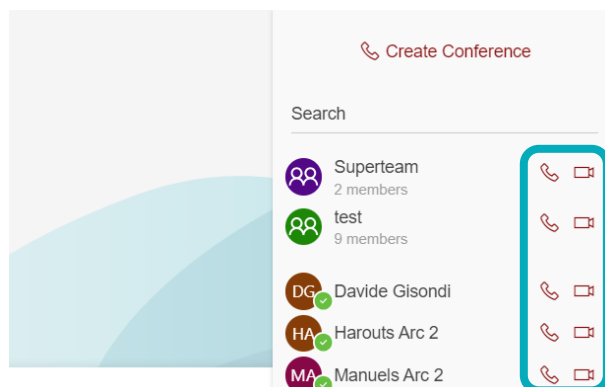
- Open TV Frontline Command Center
- Log in to your Frontline account

2 Call

2.1 Initiate a call



- Click the "Call" icon next to the user name in the header.



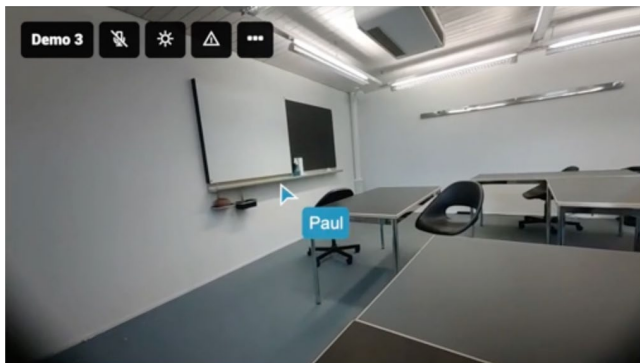
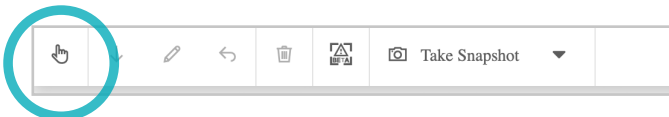
- Select your member or team you want to call.
- You have two options: audio call and video call.

2.2 Accept a call



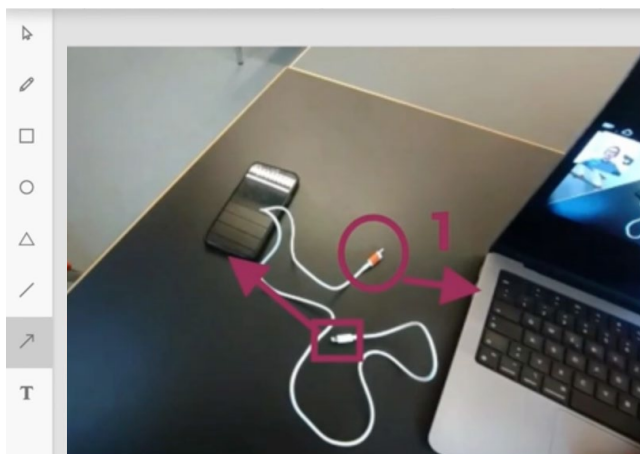
3 Call features

3.1 Pointer



- Select the pointer icon and hold down the mouse button to add a pointer to the frontline workers' view.

3.2 Create a Snapshot



- Draw, write, and mark different elements directly on your snapshot image.

3.4 Record a session/call



3.5 Settings for the Almer Arc 2

